

Zip Code 78758

Residential Statistics



September 2021

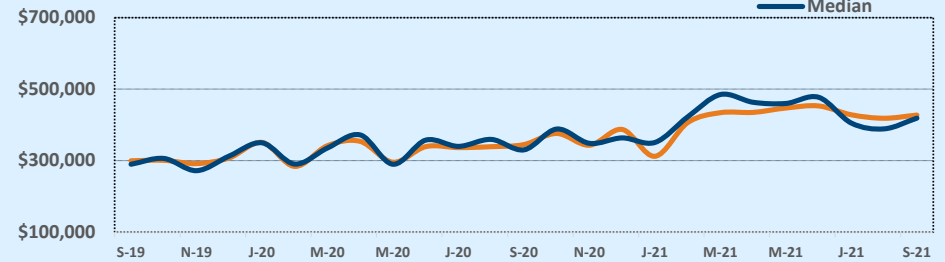
Listings	This Month			Year-to-Date		
	Sep 2021	Sep 2020	Change	2021	2020	Change
Single Family Sales	29	21	+38.1%	216	175	+23.4%
Condo/TH Sales	12	12	--	97	73	+32.9%
Total Sales	41	33	+24.2%	313	248	+26.2%
New Homes Only	1	--	--	3	--	--
Resale Only	40	33	+21.2%	310	248	+25.0%
Sales Volume	\$17,530,234	\$11,384,835	+54.0%	\$132,476,018	\$82,562,783	+60.5%
New Listings	--	--	--	--	--	--
Pending	18	33	-45.5%	25	278	-91.0%
Withdrawn	7	4	+75.0%	28	17	+64.7%
Expired	1	1	--	4	8	-50.0%
Months of Inventory	0.6	1.0	-43.2%	N/A	N/A	--

Price Range	This Month			Year-to-Date		
	New	Sales	DOM	New	Sales	DOM
\$149,999 or under	--	--	--	3	8	32
\$150,000- \$199,999	3	2	4	25	20	13
\$200,000- \$249,999	--	2	6	19	11	5
\$250,000- \$299,999	9	4	9	54	34	8
\$300,000- \$349,999	4	6	5	29	32	6
\$350,000- \$399,999	5	5	16	45	27	18
\$400,000- \$449,999	3	3	18	45	34	8
\$450,000- \$499,999	3	8	13	46	41	9
\$500,000- \$549,999	4	1	39	31	32	7
\$550,000- \$599,999	6	5	17	43	39	7
\$600,000- \$699,999	2	5	22	21	32	8
\$700,000- \$799,999	--	--	--	1	2	4
\$800,000- \$899,999	--	--	--	1	1	5
\$900,000- \$999,999	--	--	--	--	--	--
\$1M - \$1.99M	--	--	--	2	--	--
\$2M - \$2.99M	--	--	--	--	--	--
\$3M+	--	--	--	--	--	--
Totals	39	41	14	365	313	9

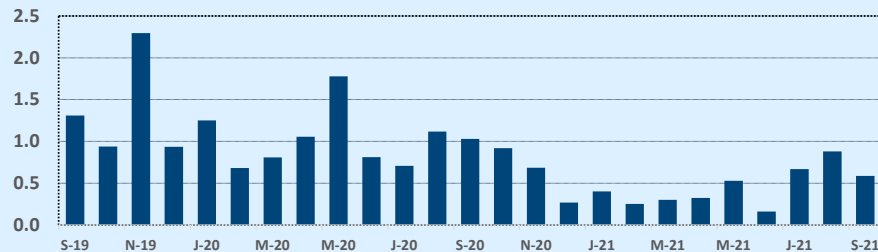
Average	This Month			Year-to-Date		
	Sep 2021	Sep 2020	Change	2021	2020	Change
List Price	\$430,404	\$347,799	+23.8%	\$398,128	\$332,740	+19.7%
List Price/SqFt	\$296	\$234	+26.6%	\$282	\$228	+23.8%
Sold Price	\$427,567	\$344,995	+23.9%	\$423,246	\$332,914	+27.1%
Sold Price/SqFt	\$296	\$233	+26.7%	\$300	\$229	+31.3%
Sold Price / Orig LP	98.9%	98.1%	+0.7%	106.6%	99.5%	+7.1%
Days on Market	14	20	-34.0%	9	17	-43.4%

Median	This Month			Year-to-Date		
	Sep 2021	Sep 2020	Change	2021	2020	Change
List Price	\$425,000	\$340,000	+25.0%	\$410,000	\$332,395	+23.3%
List Price/SqFt	\$295	\$241	+22.6%	\$279	\$228	+22.8%
Sold Price	\$419,000	\$330,250	+26.9%	\$430,000	\$335,000	+28.4%
Sold Price/SqFt	\$292	\$238	+22.9%	\$298	\$228	+30.4%
Sold Price / Orig LP	100.0%	100.0%	+0.0%	105.0%	100.0%	+5.0%
Days on Market	7	7	--	5	5	--

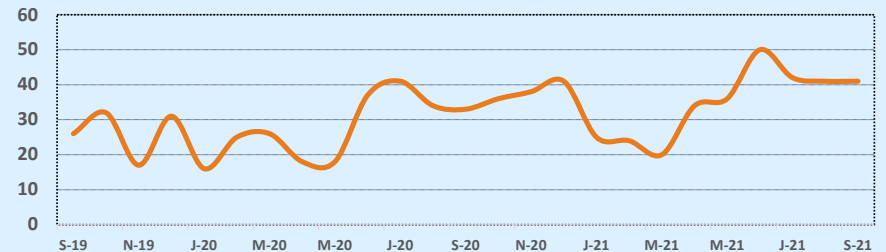
Average & Median Sales Price - Last Two Years



Months of Inventory - Last Two Years



Number of Sales - Last Two Years



Based on information from the Austin Board of REALTORS® (alternatively, from ACTRIS). Neither the Board nor ACTRIS guarantees or is in any way responsible for its accuracy. The Austin Board of REALTORS®, ACTRIS and their affiliates provide the MLS and all content therein "AS IS" and without any warranty, express or implied. Data maintained by the Board or ACTRIS may not reflect all real estate activity in the market.